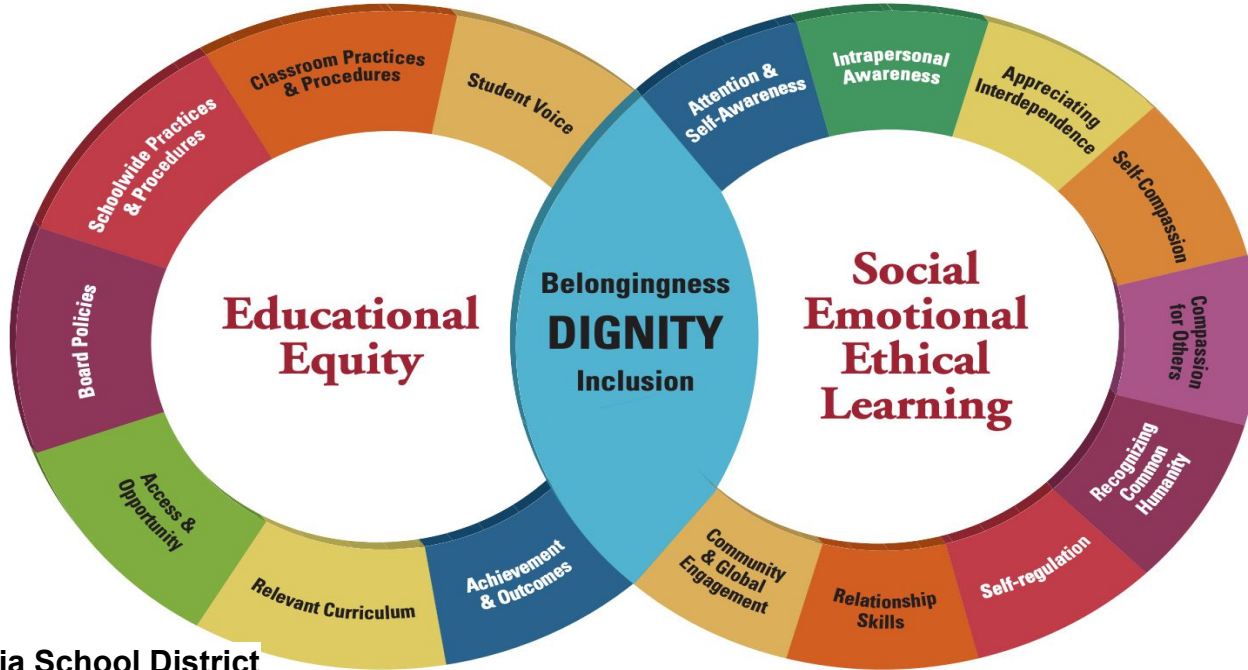




# Inclusivity & Belonging in RTMSD

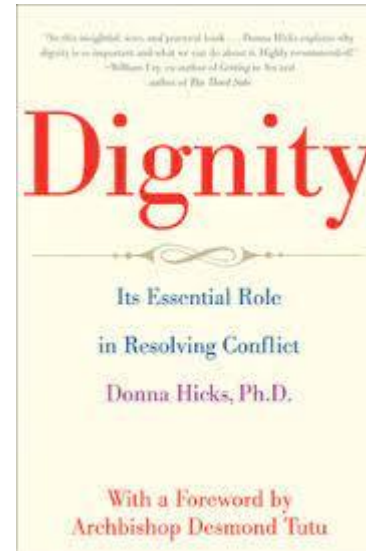
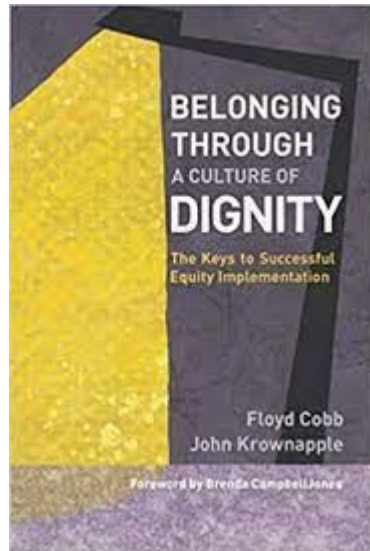
# INCLUSIVITY & BELONGING

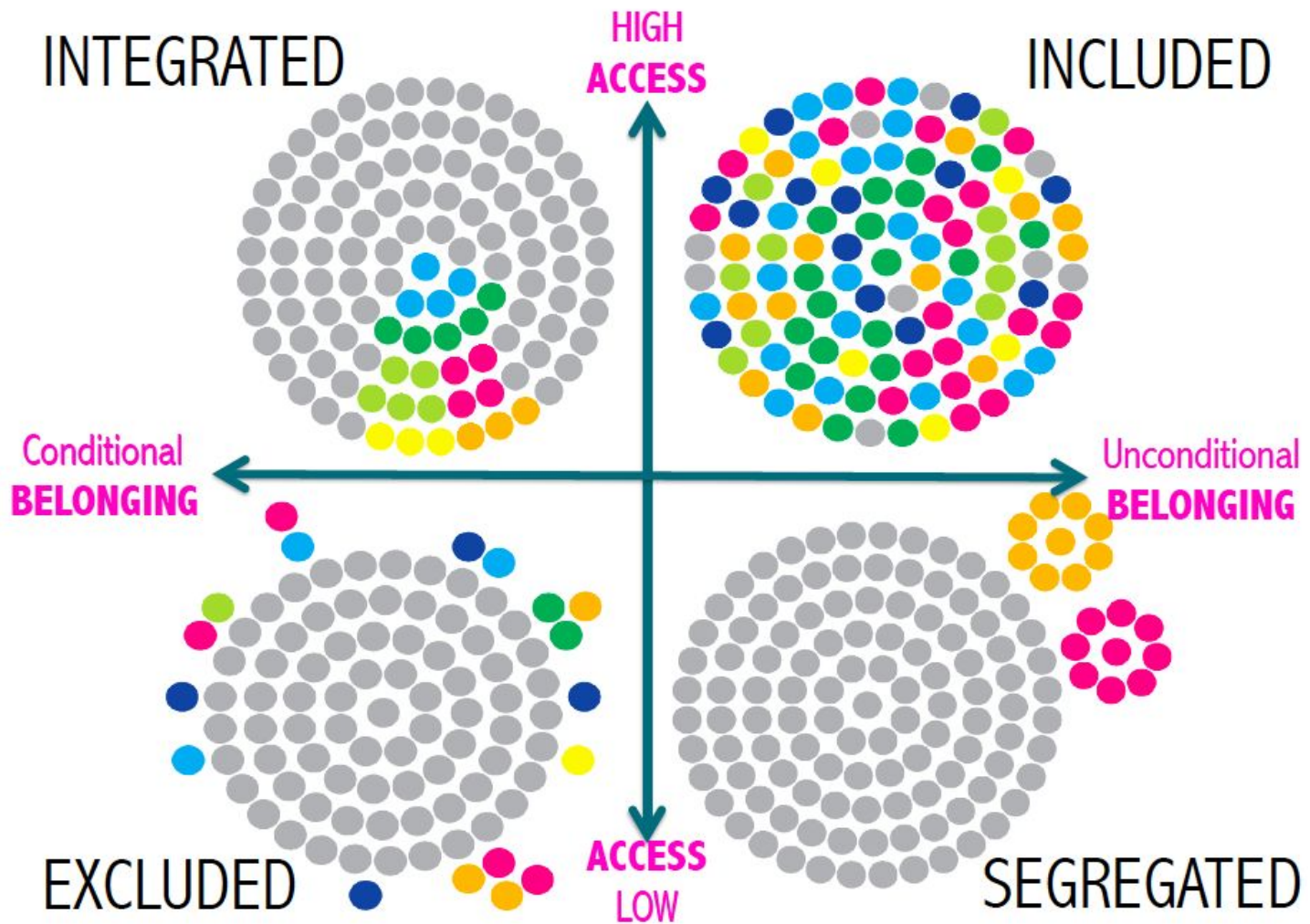


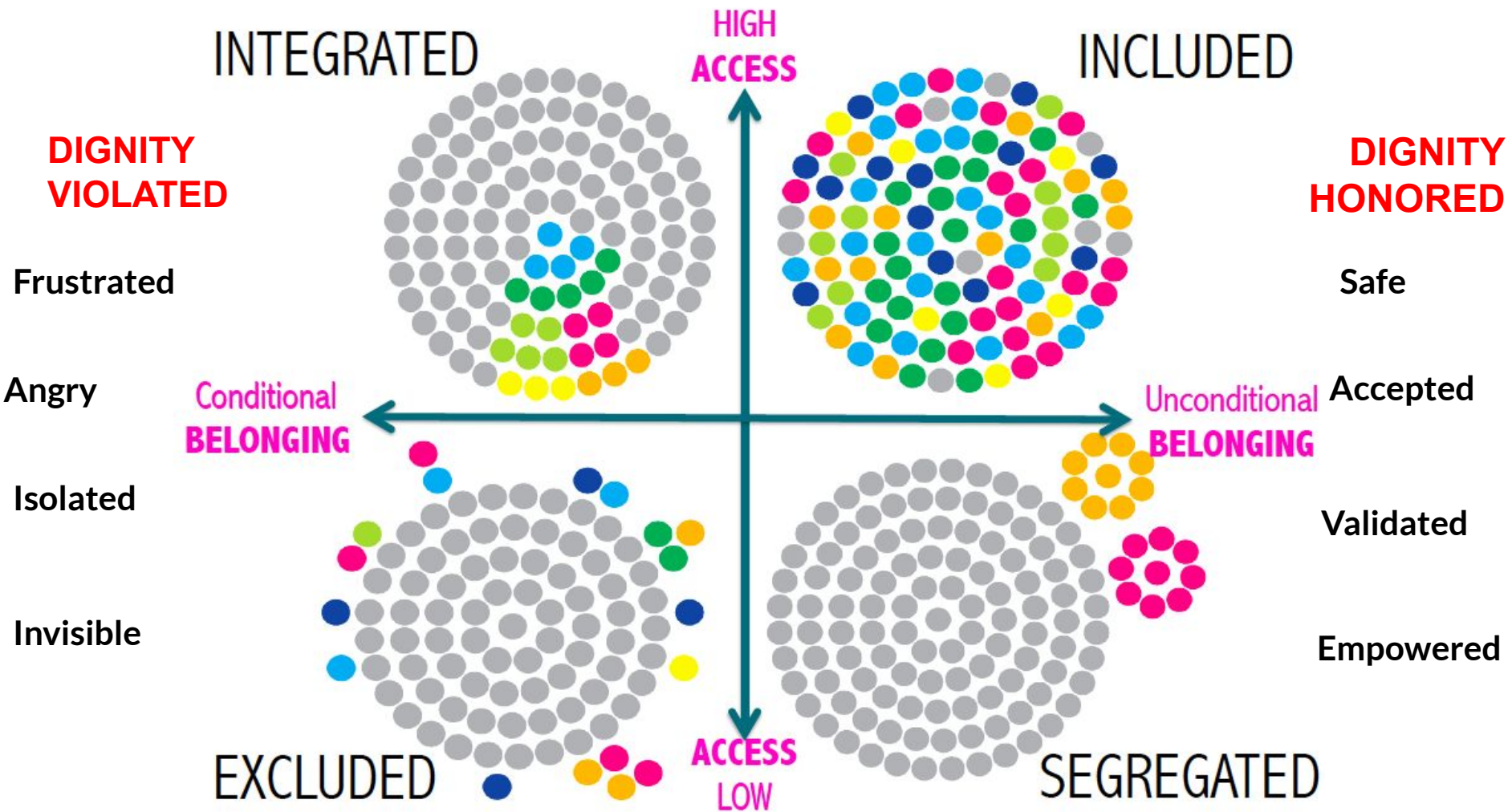
The RoseTree Media School District cultivates and supports an inclusive culture where everyone belongs and each person's inherent dignity is honored.



## Research and Resources





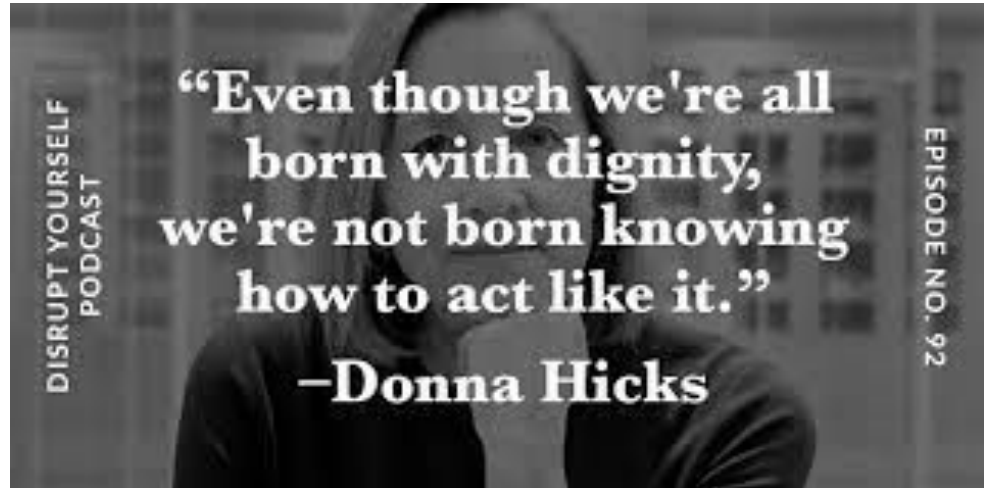


Source: Included Through A Culture of Dignity (2019) by Floyd Cobb & John Krownapple



# What Is Dignity?

[Donna Hicks: What Is Dignity TEDx](#)





## 10 Elements of Dignity

Acceptance of Identity

Inclusion

Safety

Acknowledgement

Recognition

Fairness

Benefit of Doubt

Understanding

Independence

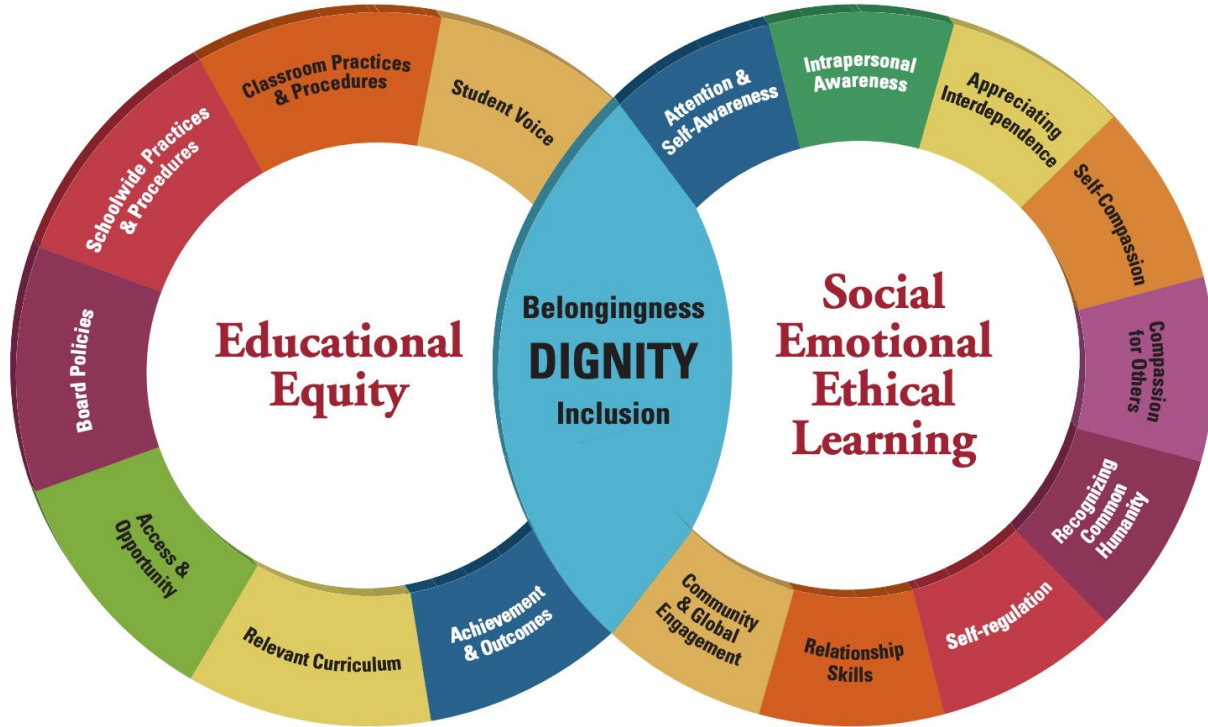
Accountability (taking responsibility)

# Key To Successful Educational Equity Implementation





# INCLUSIVITY & BELONGING



# The Equity Lens Framework



Source: Pennsylvania School Board Association

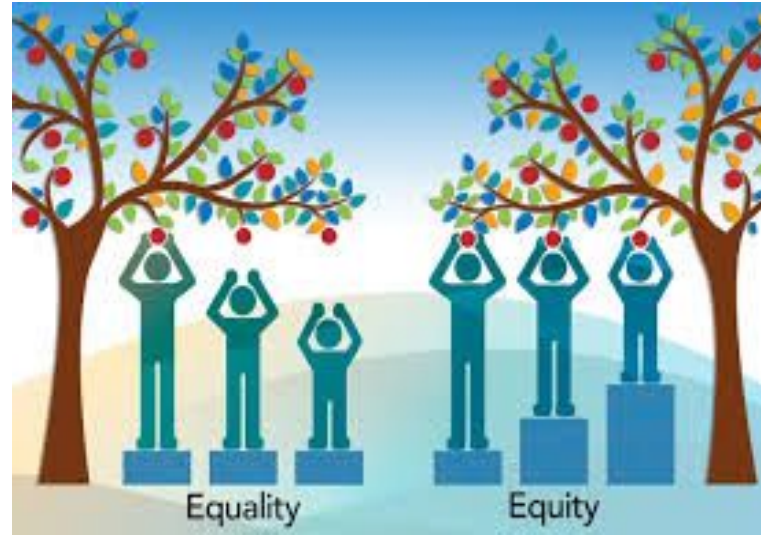
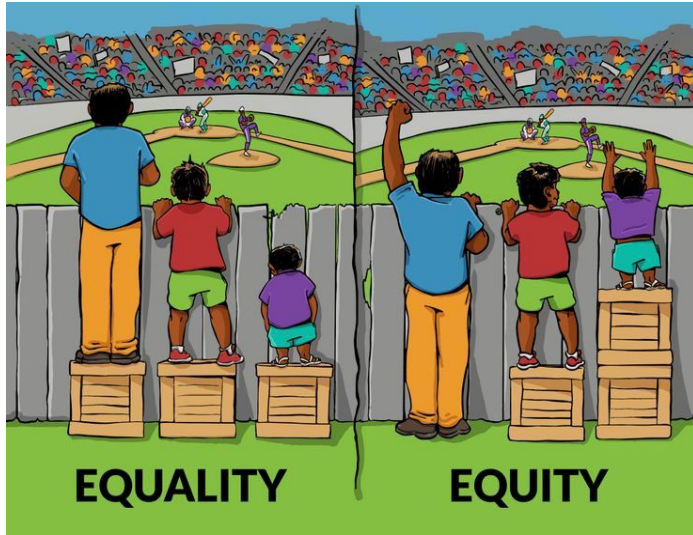
# Relevant Curriculum & Resources

National Association of Media  
Literacy Education

[NAMLE: Key Questions for Analyzing Media](#)

NAMLE KEY QUESTIONS TO ASK WHEN ANALYZING MEDIA MESSAGES		
<p><b>LEARNING YOUR GOALS:</b> Media literacy is the ability to analyze and evaluate media messages. The skills you learn in this course will help you understand the role of media in our lives and how it can be used to inform, educate, and entertain. You will also learn how to identify and analyze the different types of media messages and how they are used to influence our thoughts and actions. This course will help you become a more critical consumer of media and a more responsible user of media technology. You will also learn how to create your own media messages and how to use media to solve problems and improve your life.</p>		
IDENTIFYING & ANALYZING	QUESTION	Who made this?
	QUESTION	Why do you think they made it? What do you think they are trying to sell?
	QUESTION	Who is the target audience?
	QUESTION	What are they trying to do? What are they selling?
EVALUATING	QUESTION	Who is the target audience for this message?
	QUESTION	Who might be harmed by it?
	QUESTION	Who is the source of this message? How do you know it's reliable?
	QUESTION	How do you know it's reliable? How do you know it's not biased?
APPLYING & CREATING	QUESTION	What does this message say to you? How do you think about it?
	QUESTION	What are the values, assumptions, or goals of the message?
	QUESTION	What are the values, assumptions, or goals of the message? How do you think about it?
	QUESTION	What are the values, assumptions, or goals of the message? How do you think about it?

# Educational Equity Defined



---

# What Does Equity Look Like in Action?

**Instructional Interventions**

**Personalization**

**Data - Driven Decision Making**

**Allocation of Resources**

**Student Voice and Choice**

**Continued Reinforcement of Core Values: Be Responsible, Respectful, Resilient, and Ready to learn.**



---

## Equity is Not . . .

Students get a “pass”

Lowering of expectations

Curriculum is “watered down”

Teaching to the “middle”



